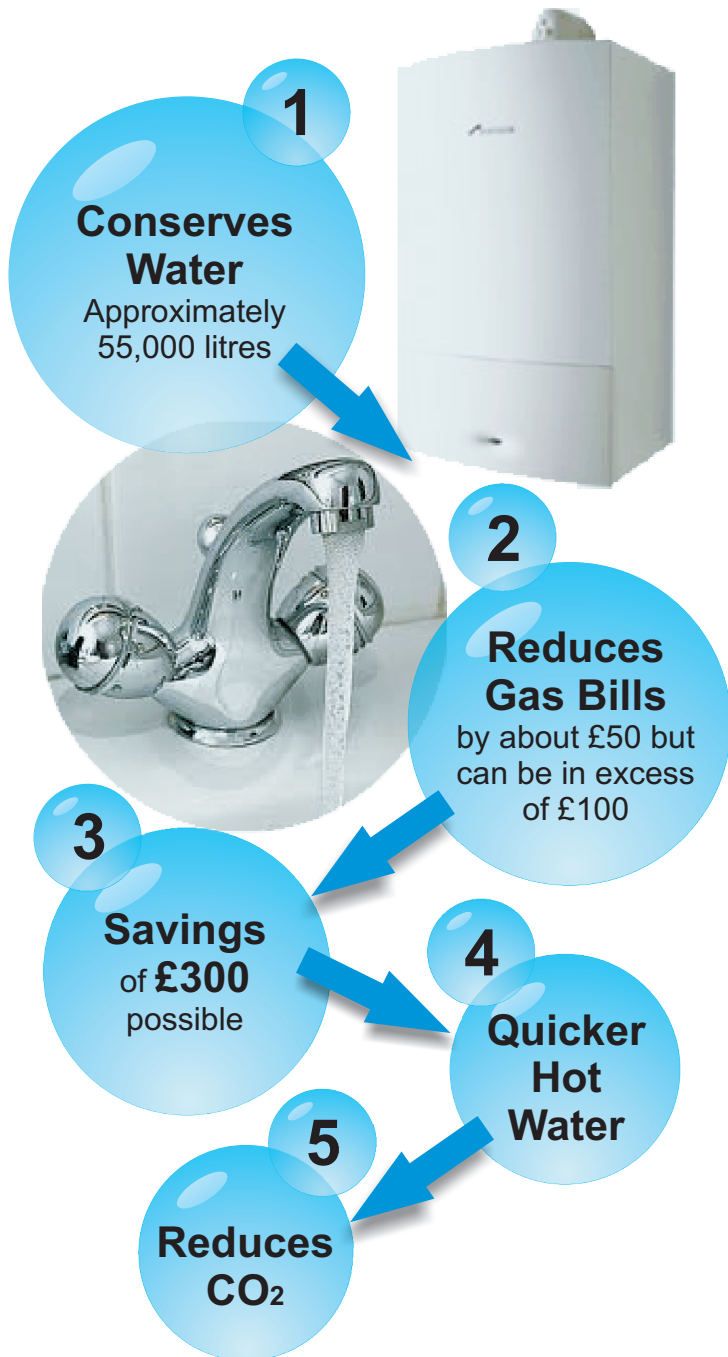


SAVINGS ANNUALLY IN ONE HOME



CombiSave

Winner of the 2011 "It's Our World Merseyside Environmental Innovation and Technology Award"

Teddington Appliance Controls Ltd worked closely with Furlong Innovations to develop the CombiSave and is brought to market in partnership with Mole Engineering.



Teddington Appliance Controls Ltd
Teddingtons, Holmbush Industrial Estate.
St Austell, Cornwall, PL25 3HG, England
Tel: +44 (0)1726 222505
Fax: +44 (0)1726 67953
Email: info@tedcon.com
Website: www.tedcon.com

CombiSave

A Combination That Won't Cost You The Earth

- **SAVE Water**
 - **SAVE Gas**
 - **SAVE Time**
 - **SAVE Money**
- and
Reduce your
Carbon Footprint



CombiSave is compatible with new and existing combination boilers.



CombiSave is...

...a thermostatically operated valve set to become an essential add-on for new and existing "in-situ" combination ("combi") boilers.

Tests show that a combi-boiler can waste the first 10 litres of water between the time the hot tap is turned on and the water running hot. Meanwhile, excess gas is burnt, carbon produced and the consumer waits!

A CombiSave valve is suitable for retro-fitting to any make of wall hung comb-boiler in less than 30 minutes and will not affect boiler warranty. The device is small and "fit and forget", needing no power supply or maintenance. Through thermostatic flow control during the initial firing and heating process CombiSave accelerates the heating of the hot water and reduces the fuel needed.

"Add in the reduction in carbon footprint and it's a win-win-win situation: a CombiSave fitted in 50,000 homes could save a whole reservoir of water in a year, together with associated treatment costs, as well as 12,500 tonnes of CO₂ per year".

Homes with a water meter will especially see the difference

Water is a precious resource

1 CombiSave conserves Water

55,000 litres per year, that's around £140.

2 CombiSave reduces Gas Bills

By about £50 in gas annually, but can be in excess of £100.

3 CombiSave saves Money

Less water and gas are used after CombiSave is fitted.

4 CombiSave provides Quicker Hot Water

Some homes with a combination boiler wait over a minute for water to run hot from the tap; on average 21 hours of time per person per year could be saved by not having to wait for hot water!

5 CombiSave reduces Carbon Footprint

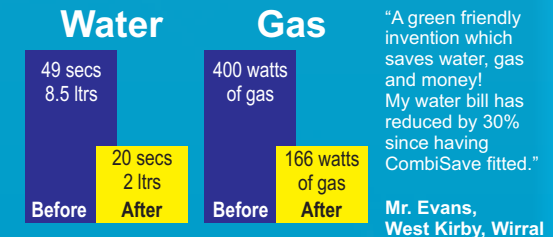
A saving of approximately 260Kg to 500Kg of CO₂ per year per home.

In Government backed tests conducted during January 2010 the experts concluded that

"The CombiSave does provide a robust method of preventing excessive waste during the initial start-up phase of hot water production by a combi-boiler".

EXAMPLES OF SAVINGS

Examples of delay time in waiting for water to get warm before and after CombiSave.



Savings are approximate and based on one home with a 28kw boiler and four persons. Gas and water costs calculated on 2009/2010 rates. Please see website for more details.

Figures based on Government backed, independent scientific tests by EA Technologies.

Provides Quicker Hot Water | Reduces Gas Bills | Conserves Water